

Airport Master Plan
for
Norman Y. Mineta
San Jose International Airport

As Amended Through April 2020

Prepared by
City of San Jose Airport Department
June 2020

Contents

Airport Master Plan Overview	1
Summary Tables: Airport Activity Levels and Facilities	2
Airport Master Plan Project List and Reference Exhibits	3
Airport Master Plan Additional Program Components	10
Airport Master Plan Milestones	11
Recent Aerial Photograph	12

Airport Master Plan Overview

The Airport Master Plan for San Jose International (SJC) consists of a program of facility improvements designed to adequately accommodate projected aviation demand (passenger, cargo, and general aviation), with development phased as demand warrants and as determined to be financially feasible.

The current Airport Master Plan was originally adopted by the City of San Jose in 1997 and is kept updated through a series of formally-approved “amendments”. Pursuant to the most recently-approved amendment in April 2020, the Airport Master Plan currently extends to the year 2037 and includes over 70 specific facility improvement projects, many of which have been completed to date.

Key elements of the development program are:

- Airfield Facilities: Reconstruction/extension of Runways 12L-30R and 12R-30L to maximum on-site length (11,000 feet), supported by numerous taxiway system improvements capable of serving wide-body commercial aircraft, and removal of Runway 11-29 formerly serving small general aviation aircraft.
- Passenger Terminal Facilities: Up to 42 air carrier gates provided through construction of new and remodeled terminal buildings to adequately serve projected demand (22.5 million annual passengers and 184,000 commercial airline operations in 2037), along with public and rental car parking garages, roadway improvements, and new or expanded jet fuel storage and other support facilities.
- Air Cargo Facilities: New or expanded cargo airline and passenger airline belly-cargo facilities on the northeast and southeast sides of the Airport to accommodate projected air cargo demand.
- General Aviation Facilities: New or reconfigured general aviation aircraft parking and servicing facilities on the west side of the Airport to accommodate projected demand for private corporate jet and light aircraft.

The Airport development program also incorporates environmental mitigation measures and other requirements set forth in the City of San Jose’s Airport Master Plan Environmental Impact Report (EIR) and the City’s Airport Master Plan Implementation Ordinance. These associated requirements have also been updated over time.

Summary of Airport Activity Levels

Activity Element	1996 Actual*	2019 Actual*	2037 Projected*
Passengers	10,009,000	15,650,400	22,532,000
Aircraft Operations:			
• Passenger Airline	126,000	147,400	183,900
• All-Cargo	4,200	1,500	2,000
• General Aviation	157,700	58,000	51,600
• Military	400	200	200
Total	288,300	207,100	237,700
Cargo Tonnage:			
• All-Cargo Airline	88,500	34,100	57,300
• Airline Belly-Cargo	22,100	21,100	42,900
Total	101,600	55,200	100,200
Based Aircraft**	440	139	164

Summary of Airport Facilities

Facility Element	1996 Actual*	2019 Actual*	2037 Planned*
Runway Length (feet):			
• 12R-30L	10,200	11,000	11,000
• 12L-30R	4,400	11,000	11,000
• 11-29**	4,600	--	--
Air Carrier Gates	31	36	42***
Terminal Building (sq.ft.)	408,000	1,080,000	1,800,000
Vehicle Parking (spaces):			
• Public	7,300	6,600	12,700***
• Employee	1,200	1,500	3,700
• Rental Car Ready/Return	700	2,000	2,000
Jet Fuel Storage (gallons)	208,000	2,000,000	4,000,000
All-Cargo Area (sq.ft.)	300,000	300,000	468,100
Belly-Cargo Area (sq.ft.)	85,000	85,000	116,400
General Aviation Area (acres)**	82	79	88

* 1996 = pre-Master Plan. 2019 = most recent year. 2037 = Master Plan horizon.

** Closed on interim basis in 2009 and designated for permanent closure in 2020.

*** Maximum allowed by City's Airport Master Plan Implementation Ordinance.

Airport Master Plan Project List

Airfield Projects:	Status
A-1. Reconstruct/extend Runway 12L-30R to 11,000 feet.	Complete
A-2. Extend parallel Taxiway Y from Twy L to new Twy N and from Twy B to new Twy A.	Complete
A-3. Extend/widen parallel Taxiway Z from Twy K to Twy L.	Complete
A-4. Construct new cross Taxiway A at south end, east of extended Twy Y to west of extended Rwy 12L-30R.	Complete
A-5. Construct new cross Taxiway N at north end, from extended Twy Y to west of extended Rwy 12L-30R.	Complete
A-6. Strengthen cross Taxiway C east and west of Rwy 12L-30R.	Complete
A-7. Extend cross Taxiway D west of Rwy 12L-30R and strengthen east of 12L-30R.	Complete
A-8. Strengthen cross Taxiway E east of Rwy 12L-30R.	Complete
A-9. Strengthen cross Taxiway F east and west of Rwy 12L-30R.	Complete
A-10. Strengthen cross Taxiway H east and west of Rwy 12L-30R.	Complete
A-11. Strengthen cross Taxiway J east and west of extended Rwy 12L-30R.	Complete
A-12. Strengthen cross Taxiway K east and west of extended Rwy 12L-30R.	Complete
A-13. Strengthen cross Taxiway L from extended Twy Z to west of extended Rwy 12L-30R.	Complete
A-14. Reconstruct/extend Runway 12R-30L to 11,000 feet.	Complete
A-15. Extend new cross Taxiway A west of extended Rwy 12L-30R to Rwy 12R-30L.	Complete
A-16. Extend new cross Taxiway N west of extended Rwy 12L-30R to extended Rwy 12R-30L.	Complete
A-17. Extend/widen parallel Taxiway W south from Twy C to Rwy 12R-30L (for ADG-IV aircraft between Twy C & Twy B, and for ADG-III aircraft between Twy B and Rwy 12R-30L).	Part Complete (C→B)
A-18. Strengthen cross Taxiway C west of Rwy 12L-30R to west of Rwy 12R-30L and widen at 12R-30L for higher-speed arrivals exit to east.	Complete
A-19. Extend cross Taxiway D west of Rwy 12L-30R to west of Rwy 12R-30L and widen at 12R-30L for higher-speed arrivals exit to east.	Complete
A-20. Strengthen cross Taxiway F west of Rwy 12L-30R to Rwy 12R-30L.	Complete
A-21. Widen/strengthen cross Taxiway G west of Rwy 12R-30L (for ADG-IV aircraft).	Complete
A-22. Strengthen cross Taxiway H west of Rwy 12L-30R to Rwy 12R-30L.	Complete
A-23. Strengthen cross Taxiway J west of extended Rwy 12L-30R to west of Rwy 12R-30L and widen at 12R-30L for higher-speed arrivals exit to west.	Part Complete (strengthening)

Airport Master Plan Project List (continued)

Airfield Projects (continued):	Status
A-24. Strengthen cross Taxiway K west of extended Rwy 12L-30R to Rwy 12R-30L and widen at 12R-30L for higher-speed arrivals exit to east.	Complete
A-25. Strengthen cross Taxiway L west of extended Rwy 12L-30R to Rwy 12R-30L.	Complete
A-26. Convert former Runway 11-29 to a new parallel Taxiway V (for ADG-III aircraft) and extend south to Twy C and north to a new cross Twy V7.	Future
A-27. Construct new cross Taxiway V7 (for ADG-III aircraft) from north end of new Twy V to Twy W.	Future
A-28. Extend parallel Taxiway Z from Twy B to Twy A, and realign north of Twy G to match alignment south of Twy G.	Complete
A-29. Rehabilitate parallel Taxiway Y between Twy B and Twy L and strengthen at cross taxiways.	Complete
A-30. Construct parallel Taxiway W between Twy C and Twy L (for ADG-IV aircraft).	Complete
A-31. Strengthen cross Taxiway C from west of Rwy 12R-30L to Twy W.	Complete
A-32. Extend cross Taxiway D west of Rwy 12R-30L to Rwy 11-29 (for ADG-IV aircraft east of Twy W and for ADG-III aircraft west of Twy W).	Complete
A-33. Widen/strengthen cross Taxiway G west of Rwy 12R-30L to Twy V (for ADG-IV aircraft).	Complete
A-34. Widen/strengthen cross Taxiway J west of Rwy 12R-30L to Twy V (for ADG-IV aircraft).	Complete
A-35. Rehabilitate terminal apron pavement east of Twy Z between Twy D and Twy G.	Complete
A-36. Rehabilitate Taxiway C between Twy V and Twy W.	Complete
A-37. Close existing Taxiway V and replace with a parallel apron-edge taxilane (for ADG-III aircraft).	Future
A-38. Construct up to seven new taxiway connectors (V1-V7) between the expanded west side apron (Project G-9) and new Taxiway V (for ADG-III aircraft).	Future
A-39. Mitigate direct access from west side apron to Taxiways B, C, & D through pavement marking/painting or removal.	Future
A-40. Create up to three new taxiway connectors (W1-W3) between the southwest apron and Taxiway W (for ADG-III aircraft) through pavement marking/painting or removal.	Future
A-41. Relocate existing general aviation run-up pad to southwest apron area.	Future
A-42. Relocate Runway 12R-30L aircraft hold positions on all cross taxiways to current ADG-V aircraft standard.	Future
A-43. Widen Runway 12L-30R blast pads, and lengthen blast pad at Rwy 12L end, to current ADG-V standard.	Future
A-44. Realign existing cross Taxiways B-F, H, J, & L between Twy Y and Twy Z to mitigate direct access from east side apron to Runway 12L-30R, and rename realigned segments as Taxiways Z1-Z8 & Z10).	Future

Airport Master Plan Project List (continued)

Airfield Projects (continued):	Status
A-45. Close existing segments of cross Taxiways B-F, H, J, & L between Twy Y and Twy Z through pavement marking/painting or removal (upon completion of Project A-44).	Future
A-46. Narrow segment of existing cross Taxiway B between Twy Z and Rwy 12L-30R through pavement marking/painting.	Future
A-47. Narrow segment of existing cross Taxiway L between Twy Y and Rwy 12R-30L through pavement marking/painting.	Future
A-48. Close existing segments of cross Taxiways F and H between Rwy 12R-30L and Rwy 12L-30R through pavement marking/painting.	Future
A-49. Add pavement markings to existing parallel Taxiway W and Taxiway Y between adjacent runway displaced thresholds and taxiway end, to visually denote their use as taxiways.	Future
Terminal Projects:	Status
T-1. Construct interim long-term public and employee parking lot (up to 7,400 spaces) on vacant 55 acre site on west side (north and south of Air Traffic Control Tower).	Complete
T-2. Remove Long-Term Parking “Yellow” and “Green” lots, temporarily consolidating long-term public and employee parking on west side (upon completion of Project T-1).	Complete
T-3. Relocate Hourly Parking “Red” lot and existing parking operation facilities to interim sites during construction of Project T-4).	Complete
T-4. Construct new Public Short-Term Parking Garage (up to 5,000 spaces) and associated roadway improvements south of existing Rental Car Garage and opposite new Terminal B South Concourse (Project T-13).	Future
T-5. Construct new “North Concourse” (part of new Terminal B) between existing Terminals A and C, consisting of up to 400,000 sq.ft. and 9 air carrier gates, with passenger processing facilities.	Complete
T-6. Remove former temporary FIS facility from ramp south of Terminal C and remove City office structures at 1311 Airport Blvd.	Part Complete (FIS removed)
T-7. Relocate/expand employee parking (up to 2,600 spaces) to terminal area parking facilities or to former FMC site on west side of Coleman Ave.	Complete (Terminal A Garage)
T-8. Construct new Public Long-Term Parking Garage (up to 6,000 spaces) on former interim rental car ready/return parking lot site, including interim surface parking at site prior to garage construction and (upon completion) removal of public parking from interim west side lot.	Part Complete/ Underway (interim surface parking & removal of west side lot completed; garage phase 1 underway)
T-9. Expand/remodel Terminal A by approx. 50,000 sq.ft. (total of 400,000 sq.ft.) to provide additional passenger processing, concession, and support space.	Complete
T-10. Install temporary Terminal C passenger processing facility (approx. 25,000 sq.ft.) east of existing south wing for during demolition of other Terminal C wings (displaced by Projects T-11 and T-15).	Complete (no temporary facility)

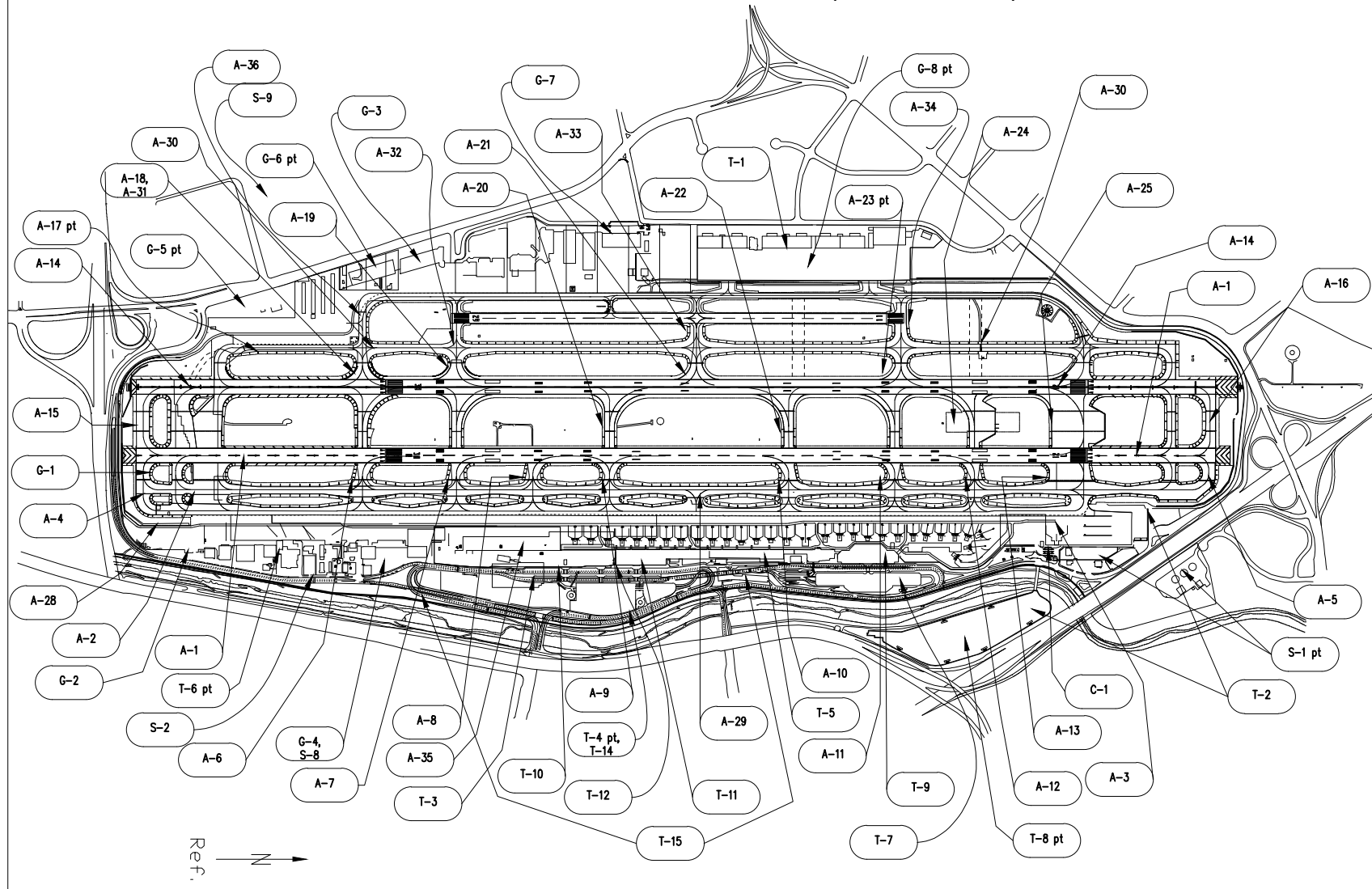
Airport Master Plan Project List (continued)

Terminal Projects (continued):		Status
T-11.	Expand North Concourse/Terminal B by up to 200,000 sq.ft. and 4 air carrier gates to south on site of demolished north wing of Terminal C (upon completion of Project T-10).	Complete
T-12.	Demolish remainder of Terminal C and temporary passenger processing facility (upon completion of Project T-11 and relocation of airline functions to Terminal A and North Concourse/Terminal B).	Complete
T-13.	Expand Terminal B (South Concourse) to south, including up to an additional 14 air carrier gates and 750,000 sq.ft. of building space, and associated passenger processing facilities (ultimate terminal complex total of up to 42 gates and 1.80 million sq.ft.).	Future
T-14.	Construct new consolidated Rental Car Garage (up to 6,000 spaces, including 2,000 ready/return spaces and vehicle servicing facilities) opposite new Terminal B. Upon completion, remove existing interim rental car ready/return, servicing, and storage facilities.	Complete
T-15.	Construct terminal area roadway improvements including a realigned/widened Terminal Dr., Airport Blvd./Terminal Dr. connection south of Terminal A, dedicated shuttle lane between Terminal A and new Rental Car Garage opposite new Terminal B, reconfigured Terminal Dr./Airport Blvd. south intersection, and associated parking lot modifications.	Complete
T-16.	Construct new multi-story business hotel south of/adjacent to new public short-term parking garage (Project T-4), up to 300,000 sq.ft. in size including up to 330 guest rooms and 300 parking spaces.	Future
Air Cargo Projects:		Status
C-1.	Construct interim expansion of east side cargo airline area ramp to the south (up to 162,000 sq.ft. of new ramp).	Complete
C-2.	Construct new cargo airline facilities at or adjacent to existing east side cargo airline areas, including up to 500,000 sq.ft. of ramp, building, and vehicle parking/movement space.	Future
C-3.	Relocate airline belly-freight facilities to new site(s) on east side of Airport, including up to 150,000 sq.ft. of ramp, building and vehicle parking/ movement space.	Future
C-4.	Remove existing Air Freight Building and vehicle parking/movement area (displaced by Projects T-13 and T-15).	Future
General Aviation Projects:		Status
G-1.	Remove south end tiedowns, shelters, and General Aviation Terminal facilities (displaced by Projects A-1, A-2, A-4).	Complete
G-2.	Remove southeast t-hangar facilities (displaced by Project A-28).	Complete
G-3.	Remove "94th Aero Squadron" restaurant facility on west side and convert site to general aviation use.	Complete
G-4.	Remove east side ACM facilities (FBO) upon lease expiration by 2009 (displaced by Project S-8).	Complete

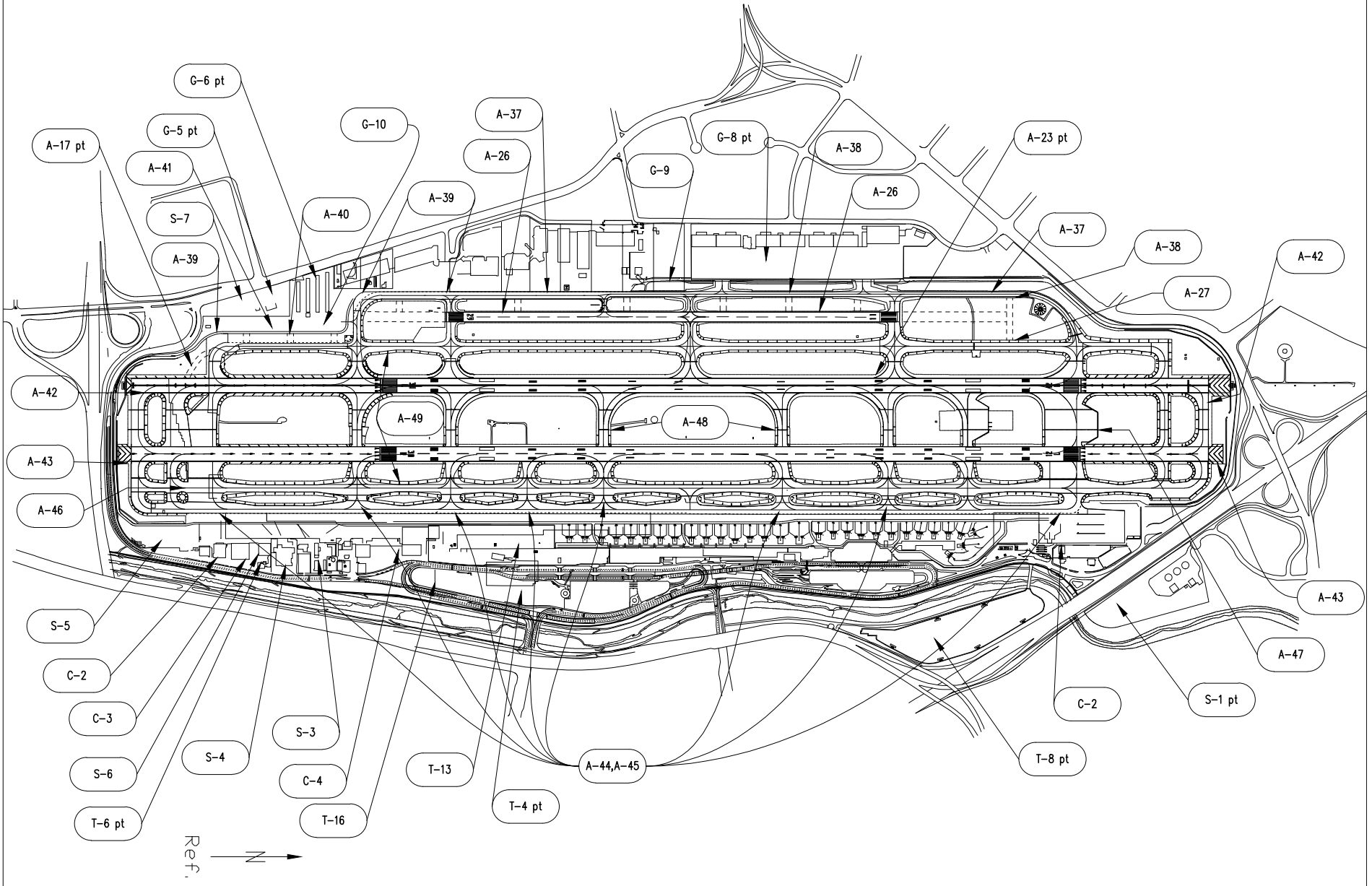
Airport Master Plan Project List (continued)

G-5.	Remove San Jose State University facilities at southwest side upon lease expiration in 2010 and convert site to aviation support or general aviation use.	Part Complete (SJSU removal)
G-6.	Establish new FBO leaseholds on west side for reconfiguration of general aviation facilities.	Part Complete (AvBase/ACM FBOs)
G-7.	Construct general aviation facilities on vacant parcel between San Jose Jet Center FBO leasehold and Air Traffic Control Tower.	Complete (SJJC expansion)
G-8.	Expand general aviation facilities onto northwest side of Airport (44 acres, upon phased implementation of Projects T-7 and T-8).	Part Complete (Signature FBO)
G-9.	Expand west side general aviation apron out to edge of new parallel taxiway (Project A-37).	Future
G-10.	Reconfigure southwest apron tiedown storage facilities (to accommodate Projects A-40, A-41, and G-5).	Future
Aviation Support Projects:		Status
S-1.	Construct approx. 7-acre fuel storage facility (up to 8 tanks, 4.0 million gallon capacity) on vacant parcel north of Hwy. 101, 2-acre fuel dispensing facility between Terminal A and north end of airfield, and pipeline connecting storage and dispensing.	Part Complete (3 tanks w/2.0 million gal.)
S-2.	Remove existing fuel storage and dispensing facilities on southeast side of Airport and clean up site (upon completion of Project S-1).	Complete
S-3.	Relocate/expand airport maintenance facilities at new sites on east or west sides of Airport.	Future
S-4.	Expand flight kitchen facilities at existing or new sites on east side of Airport or relocate/expand off-airport.	Future
S-5.	Relocate/expand airline maintenance/storage facilities at various existing or new sites on east or west sides of Airport.	Future
S-6.	Remove, relocate, or upgrade existing aviation support facilities on southeast side of Airport (1239-1311 Airport Blvd.) at various existing or new sites on east or west sides of Airport.	Future
S-7.	Relocate/upgrade/expand Airport Rescue & Fire Fighting (ARFF) facility at new site on west side of Airport, potentially including a consolidated Airport Response Center facility.	Underway
S-8.	Convert existing east side ACM leasehold to aviation support uses (upon completion of Project G-4), such as airline provisioning/security clearance facility, roadway expansion, and aircraft remote parking.	Complete
S-9.	Reuse former FMC site on west side of Coleman Ave. for interim or long-term uses to be determined over time to facilitate on-Airport development or operation, such as project construction staging, rental car storage, public or employee parking, support facilities, and compatible non-aviation leaseholds.	Complete (interim construction staging only)

AIRPORT MASTER PLAN COMPLETED IMPROVEMENTS (1997-2018)



AIRPORT MASTER PLAN FUTURE IMPROVEMENTS (2019-2037)



Airport Master Plan

Additional Program Components

- **Adoption & Amendment Process Ordinance (1993):**

Set of City requirements and procedures for preparation, adoption, and amendment of the Airport Master Plan. Subsequent to the 1997 adoption of the original Airport Master Plan, a total of 17 amendments have been adopted to date to modify or update development program components and specific facility improvement projects.

- **Environmental Impact Report (1997 and 2020):**

Approx. 30 City mitigation measures, consisting of project-specific or ongoing requirements to minimize adverse Airport development or operational impacts on the environment (e.g., air quality, biological resources, cultural resources, and other environmental conditions) in conformance with the California Environmental Quality Act. The 1997 Environmental Impact Report (EIR), kept current through one Supplemental EIR and numerous addenda, has been replaced by the newer 2020 EIR.

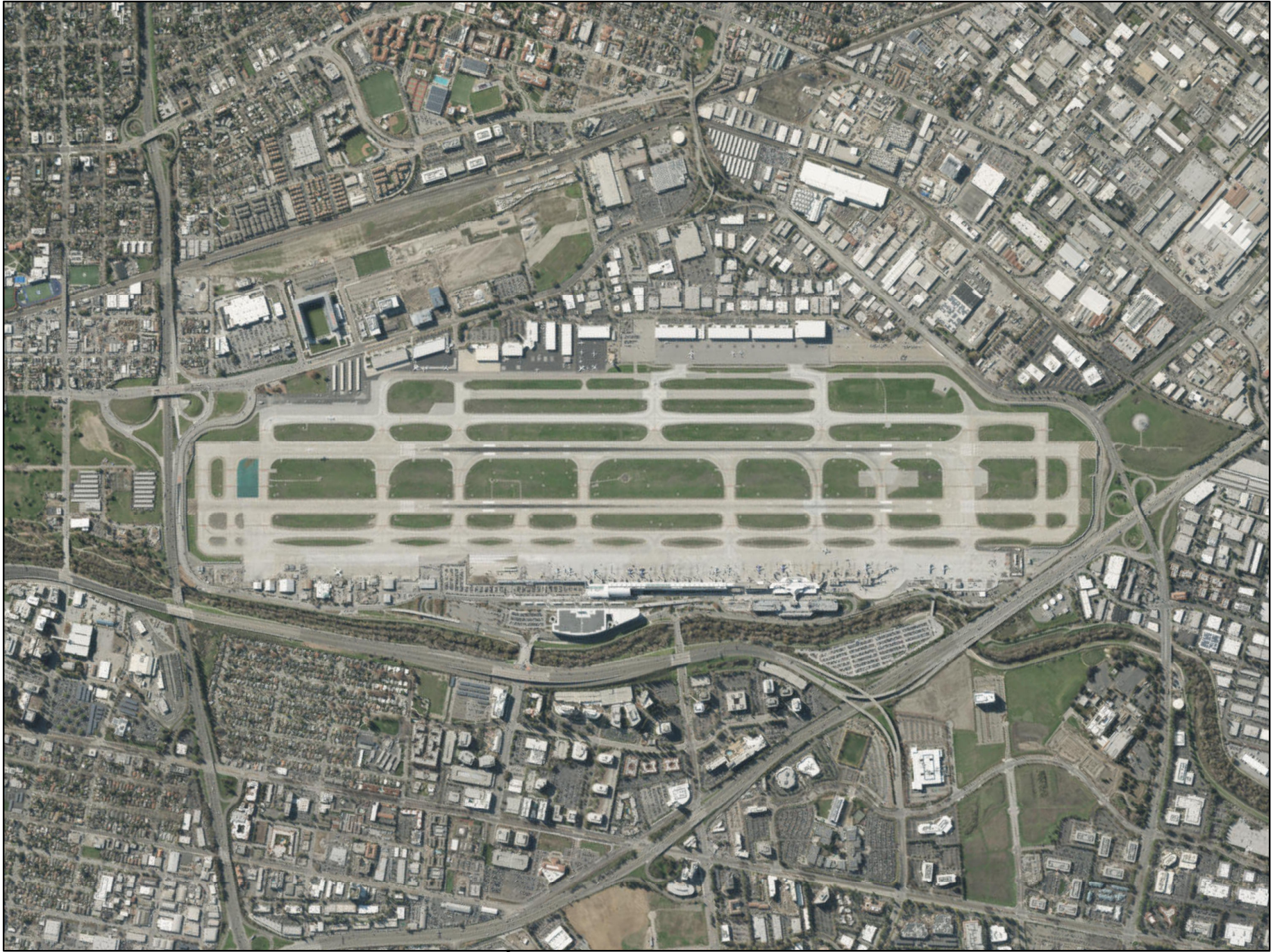
- **Implementation Program Ordinance (1998, as amended):**

Approx. 40 City policies and requirements for Airport development.

- Air carrier gates limited to total of 42.
 - Public parking limited to total of 12,700 spaces.
 - Implementation of certain Master Plan projects linked to achievement of specified activity levels, operating conditions, or ground transportation access improvements.
 - Additional required studies, reports, and noise control program efforts.
-

Airport Master Plan Milestones

- **Comprehensive Update to 1980 Airport Master Plan prepared (with new EIR for year 2010):** 1988 - 1996
 - **Updated Airport Master Plan & EIR approved by City:** June 1997
 - **Updated Airport Layout Plan approved by FAA:** December 1999
 - **Runway 12L-30R reconstructed and extended:** August 2001
 - **Amendment to Airport Master Plan to revise terminal area development projects approved:** November 2001
 - **Runway 12R-30L reconstructed and extended:** October 2004
 - **Amendment to Airport Master Plan to extend to 2017 and modify facility development program approved:** June 2006
 - **Terminal Area Improvement Program completed (new Terminal B, remodeled Terminal A, Terminal C removal, consolidated rental car garage, upgraded roadways and parking):** June 2010
 - **Amendment to Airport Master Plan to extend to 2027 and modify facility development program approved:** June 2010
 - **Amendment to Airport Master Plan to extend to 2037 and modify facility development program approved along with new EIR:** April 2020
 - **Updated Airport Layout Plan approved by FAA:** June 2020
-



SAN JOSÉ INTERNATIONAL AIRPORT